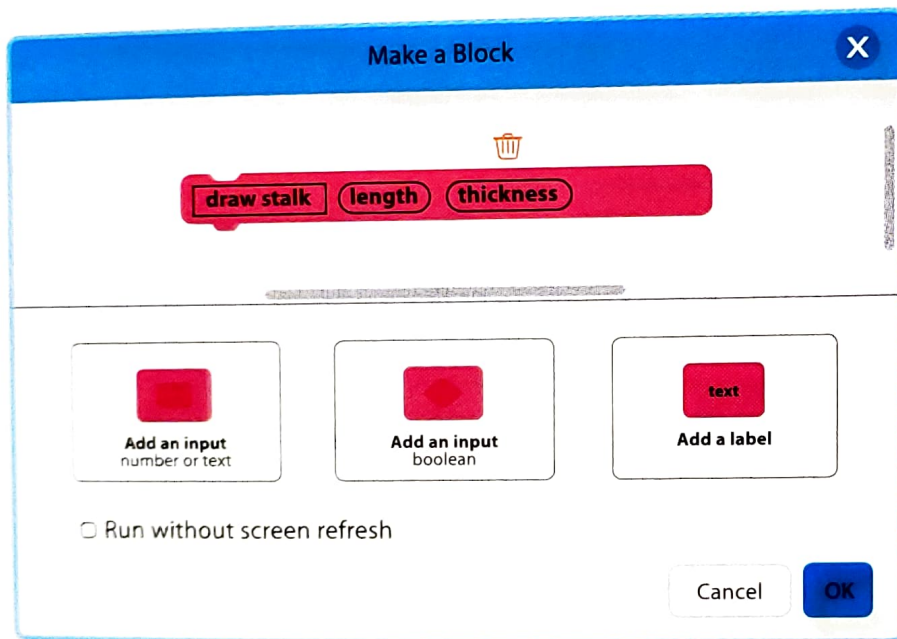


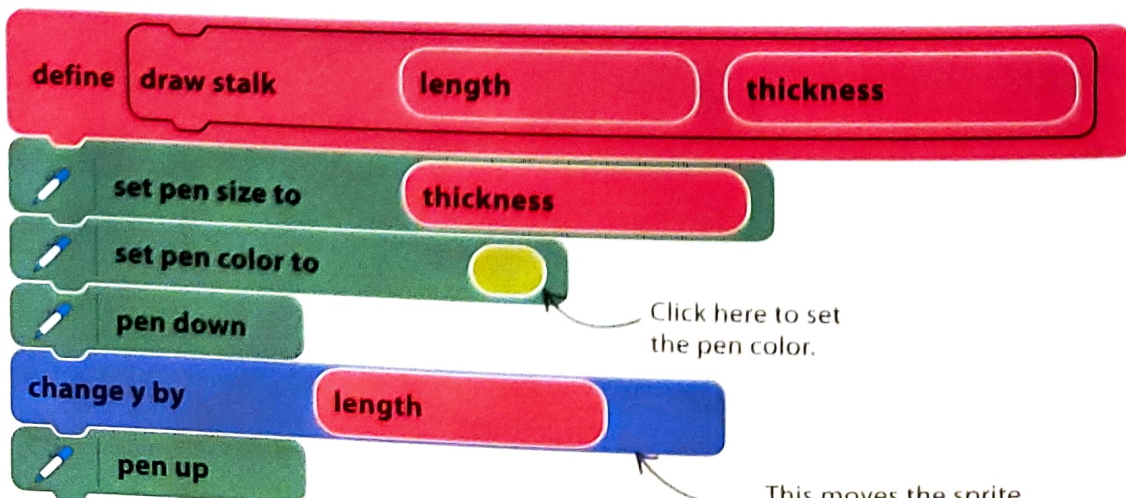
Flower stalks

Real flowers grow on stalks, so follow the next few steps to add stalks to your virtual flowers to make them look more realistic. Using custom blocks makes the code easy to read so you always know what's going on.

- 21** Choose My Blocks in the blocks palette, and then click "Make a Block". Call the new block "draw stalk". After you've typed the name of the block, add number inputs for the length and thickness of the stalk. Then click "OK".

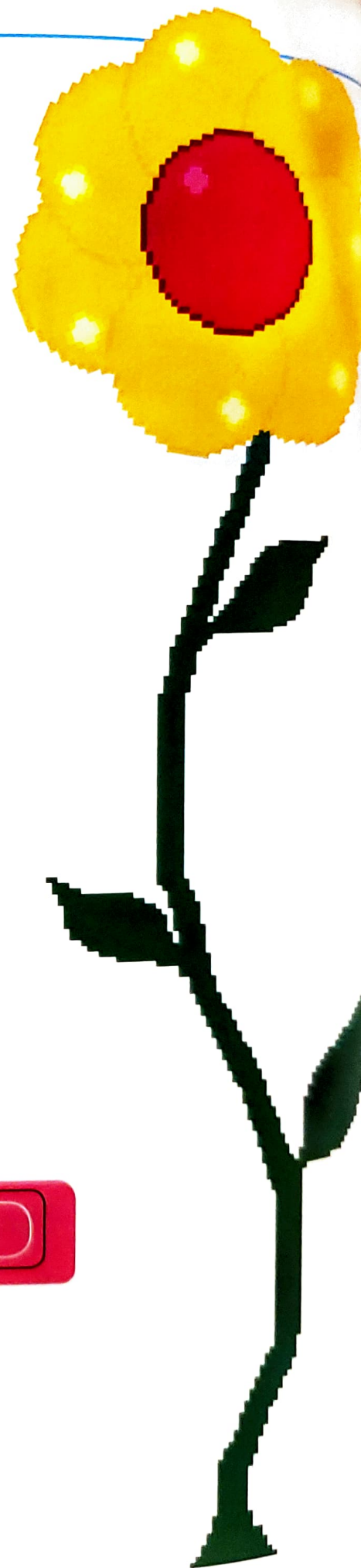


- 22** Build this code below the "define" header block. Drag the "length" and "thickness" blocks from the header to where they're used in the code.

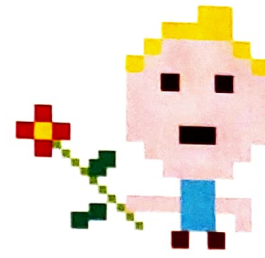


Click here to set the pen color.

This moves the sprite straight up the stage.



23 Next, add the new "draw stalk" block to the main code. Fill in the numbers to set the stalk's length to 100 and its thickness to 5.



```

when clicked
  erase all
  forever
    mouse down? then
      if mouse-pointer
        draw flower
          pick random 5 to 10
          pick random -100 to 100
          pick random -100 to 100
        draw stalk 100 5
  
```

Stalk length

Stalk thickness

24 Run the project. You can now make a whole meadow of colored flowers. Experiment with different numbers in the "pick random" blocks to change the look of your flowers.



25 For a finishing touch, add a backdrop for your flower meadow. You can paint your own backdrop by clicking the paint symbol in the backdrops menu to the right of the sprites list. Alternatively, click the backdrop symbol to load one from the library.

